

## May – June 2025 Update



### A Flourishing Landscape: The Rewards of Dedicated Volunteering

Over the last four to five years, an unwavering commitment to conservation management has yielded positive results.

- The meadows today boast an abundant display of wildflowers where bees hum, butterflies flutter and grasshoppers chirp. Cowslips, black knapweed and bird's-foot trefoil are flowering across the fields. The three tiny forests have now developed into robust, thriving pockets of greenery, forming dense canopies that provide a new habitat for wildlife.
- The planted hedges are developing steadily and the straggly shrubs along Jacob's ladder have been joined up into thriving hedges.
- Dozens of new saplings were planted this winter in the Inner Field; they will grow into towering sentinels over the coming decades.

### The Beast vs. Big Red and Big Yella

We started mowing in June 2024 and continued, on and off, up to late March this year. For the first cut, it's hand scything combined with the scythe mower ("Big Red"). Our second cut, from autumn onwards is with "Big Red" and "Big Yella" (our battery-powered rotary mower). We are 4 years in, and we're beginning to see things turning a corner.

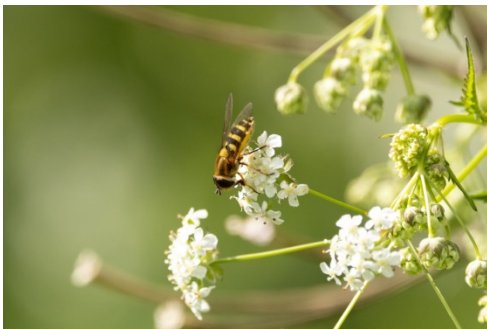


The real labour of love is the associated raking by hand of the mowed areas, which makes all the difference to the spread of wild flowers. If you'd like to discover the joys of mowing for yourself, get in touch. There is always room for one more.

## 2025 Photo Competition



The idea is simple: Come over to the fields and get snapping. Send your picture over to us and our panel will pick a winner. This competition really is open to all and **FREE to enter**. There are 3 categories. One for those in primary school, the second for those in secondary school and lastly for those who no longer attend school. You don't need any fancy equipment. A phone will do. The prizes are pretty good too. **First prize in each of the categories is £25.00!** Runners up get a full set of our greetings cards that retail at just over £10.00. Interested? Go to [friendsoflyncombehillfields.co.uk](http://friendsoflyncombehillfields.co.uk) and click on "Photo Competition" or use the QR code.



### Photo Gallery

Please check out our [website](http://friendsoflyncombehillfields.co.uk) to view more photos selected by our Photo Team.

### Donations to FLHF via Localgiving

If you'd like to support our work in the fields your donations are very welcome. Please do donate via Localgiving on our website [friendsoflyncombehillfields.co.uk](http://friendsoflyncombehillfields.co.uk)

Remember there is an option to donate via direct debit so you may give a small sum every month, for as long as you wish, rather than a single larger sum. Donations to FLHF via Localgiving from UK taxpayers also enable FLHF to benefit from Gift Aid payments.

### Volunteering

Typically around 12 people join us in the Fields for two hours on Sunday mornings, with slightly smaller numbers on Wednesday mornings. These sessions are normally from 10.00 to 12.00, but during the summer period (from around mid-June) we move to 09.00-11.00 on Sunday mornings, and from 19.00 until dusk on Wednesday evenings, when temperatures are more comfortable.



You can come as often or as infrequently as you wish. In doing so you will do your bit to improve the local environment and community, and improve your health. We will teach you new skills, and you will find that this is a very sociable activity. There are no fees; all it costs is your time. If you or any family or friends are interested in getting involved, please contact us at [lyncombehillfields@gmail.com](mailto:lyncombehillfields@gmail.com)